



CERTIFICATE OF ANALYSIS

20 Martin Ross Avenue, North York, ON, M3J 2K8, CANADA
Tel: (416) 665-9696, Fax: (416) 665-4439
Email: orders.trc@lgcgroup.com Website: www.trc-canada.com

1. Identification

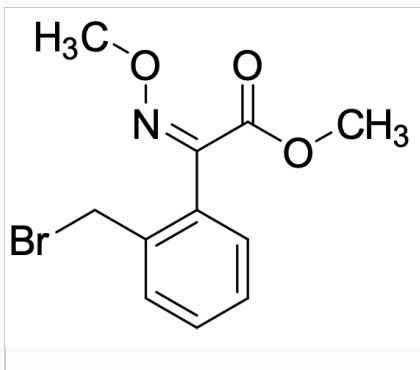
Catalogue Number: M365110

CAS Number: 115199-26-3

Product: Methyl 2-(2-(Bromomethyl)phenyl)-2-(methoxyimino)acetate

Synonym: 2-(Bromomethyl)phenylglyoxylic Acid Methyl Ester O-Methyloxime; 2-Methoxyimino-2-[2-(bromomethyl)phenyl]acetic Acid Methyl Ester; 2-[2-(Bromomethyl)phenyl]-2-(methoxyimino)acetic Acid Methyl Ester; Methyl 2-(2-Bromomethylphenyl)-2-methoximinoacetate; Methyl 2-(2-Bromomethylphenyl)glyoxylate O-Methyloxime; Methyl 2-bromomethyl- α -methoxyiminophenylacetate

Structure:



Molecular Formula:

C₁₁H₁₂BrNO₃

Molecular weight:

286.12

Source of Product:

N/A

Solubility:

Chloroform (Slightly), DMSO (Slightly)

Lot Number: 13-QIU-108-1

Purity: 95%

Shipping Condition: This Product Is Stable To Be Shipped At Room Temperature

Storage Condition: -20°C

2. Warning

Warning 1:

Warning 2:

Warning 3:

3. Analytical Information

Tests:	Specifications:	Results:
Appearance	Pale Yellow to Pale Beige Solid	Pale Yellow to Pale Beige Solid
NMR	Conforms to Structure	Conforms
Elemental Analysis	Conforms	%C: 46.00, %H: 4.13, %N: 4.89
MS	Conforms to Structure	Conforms

Additional Information: N/A

Purity is based on the analytical results of the tests performed. NMR and Elemental Analysis (if available) may have an accuracy of $\pm 2\%$. Isotopic purity is based on mass distribution observed. The contents of the specifications are subject to change without advance notice, and the specification values displayed here are the most up to date values.

4. Signatures

Reviewed By	Reviewed By	C of A Approved By	Test Date	Retest Date
Nicole Yip	Toni Rantanen	Chanell Chu	1/6/2022	1/4/2026